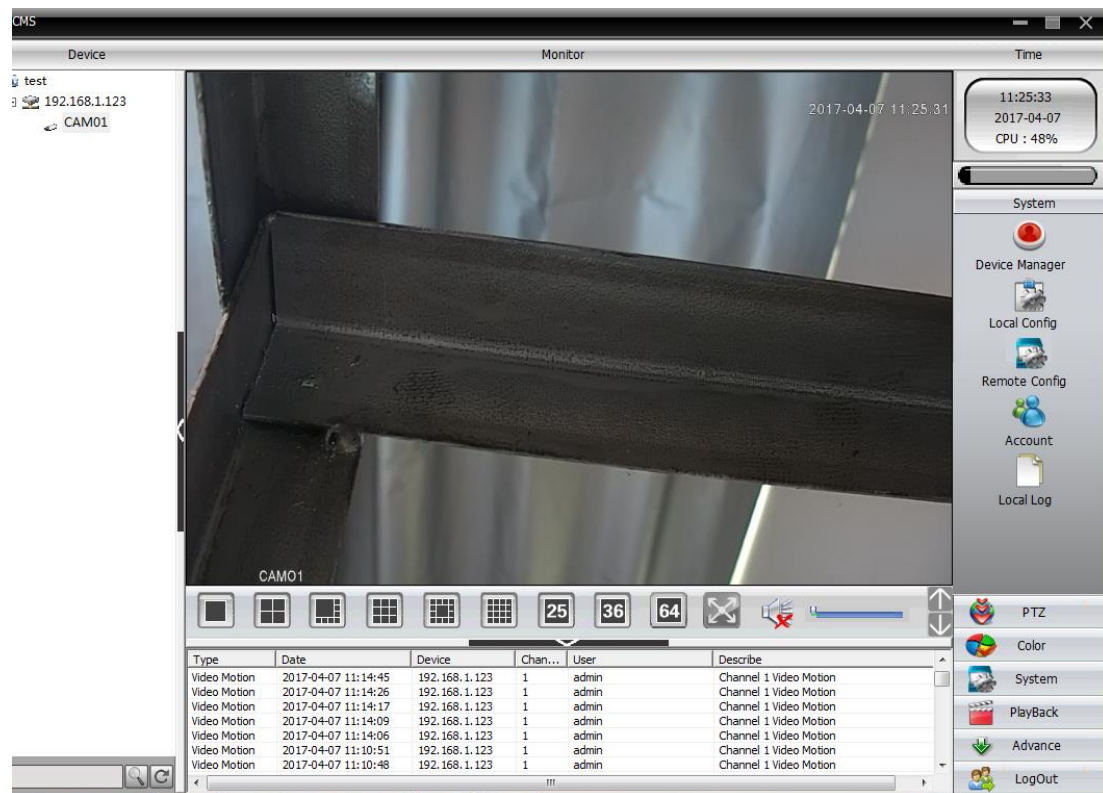


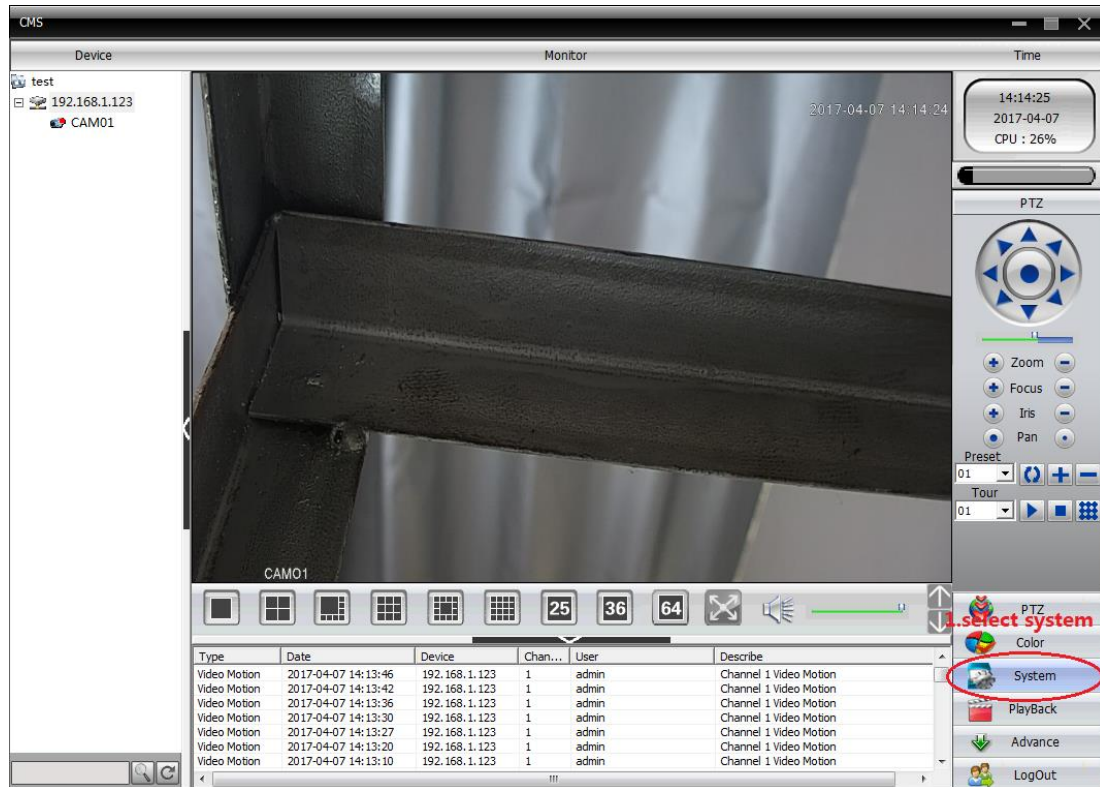
# How to record on PTZ camera

Open CMS , when it shows image, you are ready to set record

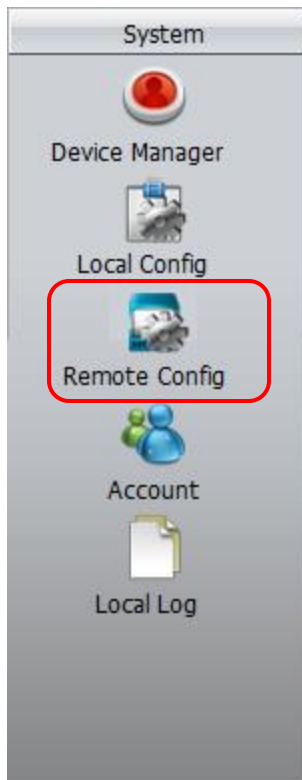


## Timing record

## 1.select system



## 2.choose local config

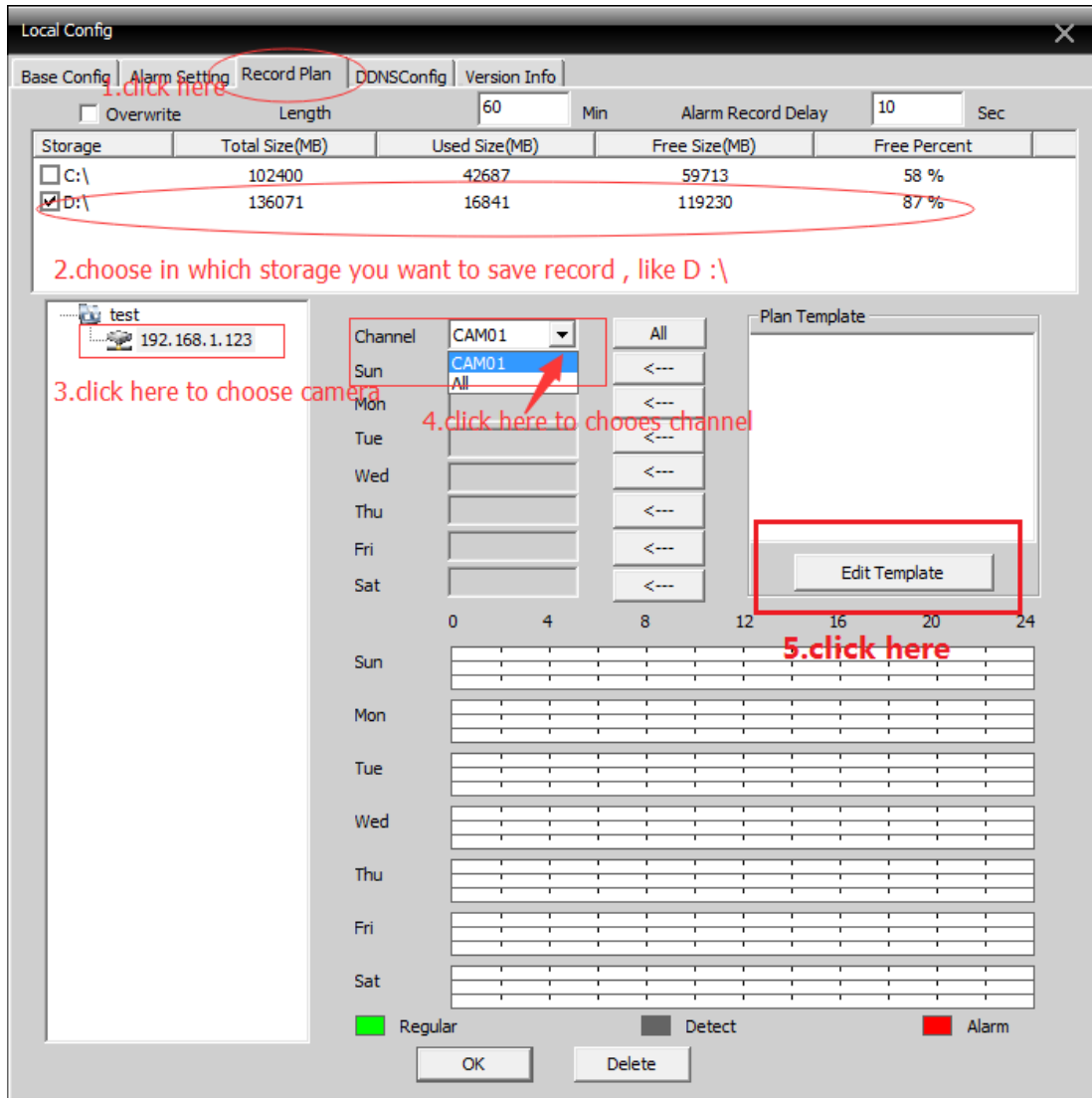


## 3.(1)choose "Record Plan" -

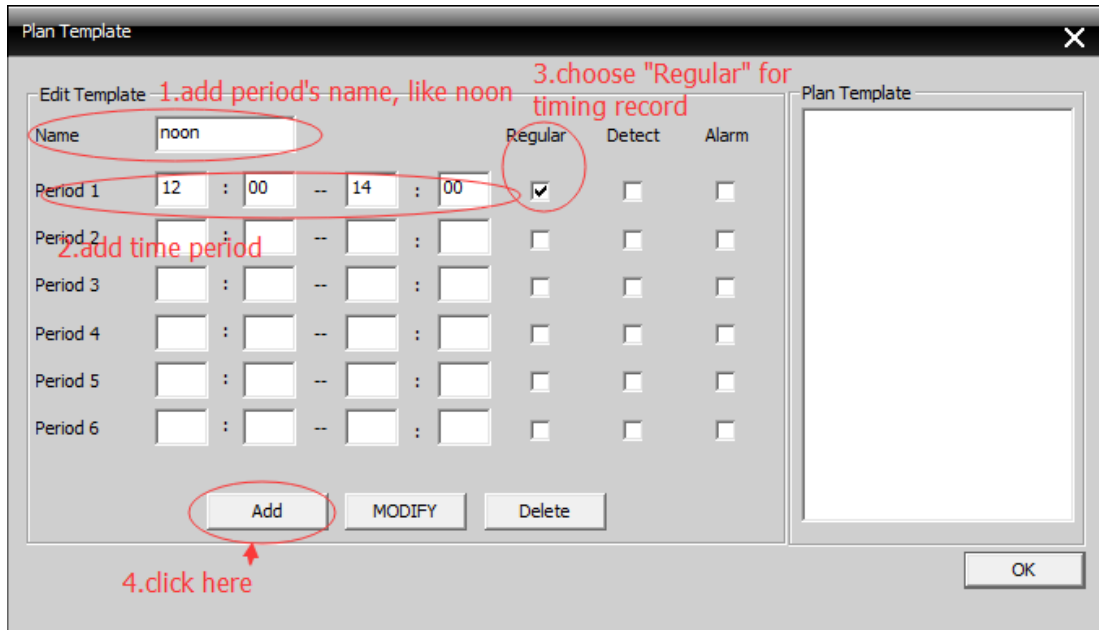
- (2)click which disk you want to save record in -
- (3)select the camera

(4)choose Channel

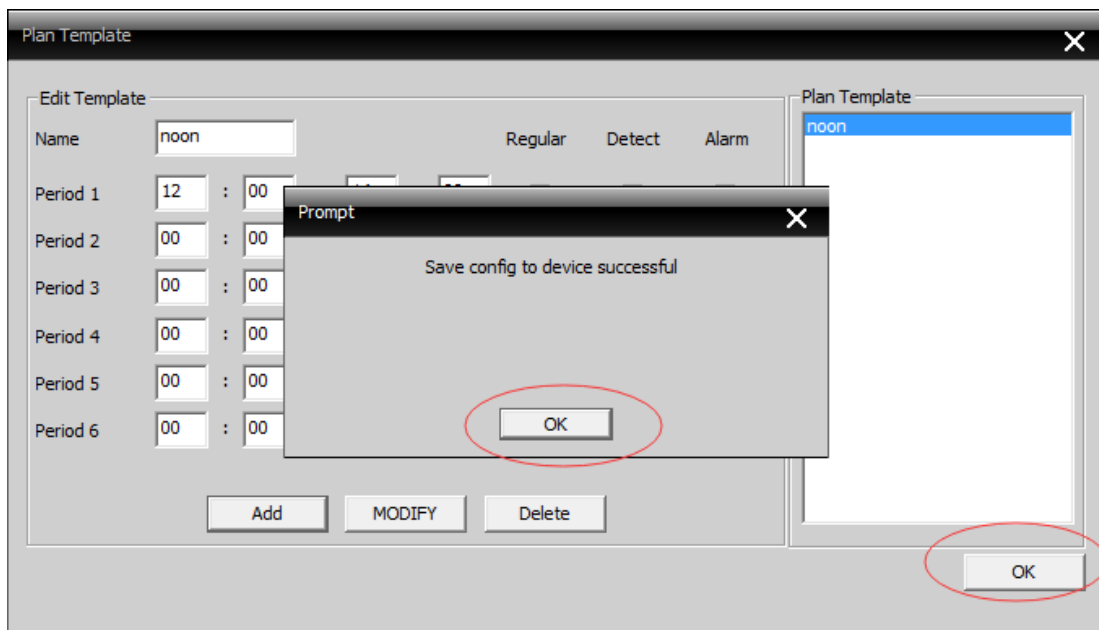
(5) edit template



4. please edit name, period, choose "Regular" ( timing record), then click "Add"



5.click "ok" to finish editing



6.please refer to picture

Local Config

Base Config | Alarm Setting | Record Plan | DDNSConfig | Version Info

Overwrite      Length: 60 Min      Alarm Record Delay: 10 Sec

Storage	Total Size(MB)	Used Size(MB)	Free Size(MB)	Free Percent
<input type="checkbox"/> C:\	102400	42689	59711	58 %
<input checked="" type="checkbox"/> D:\	136071	16841	119230	87 %

1.Click " All " means noon period will apply every day

test  
192.168.1.123

Channel: CAM01

Sun: noon  
Mon: noon  
Tue: noon  
Wed: noon  
Thu: noon  
Fri: noon  
Sat: noon

Plan Template: afternoon, noon

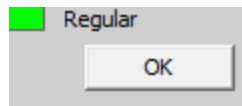
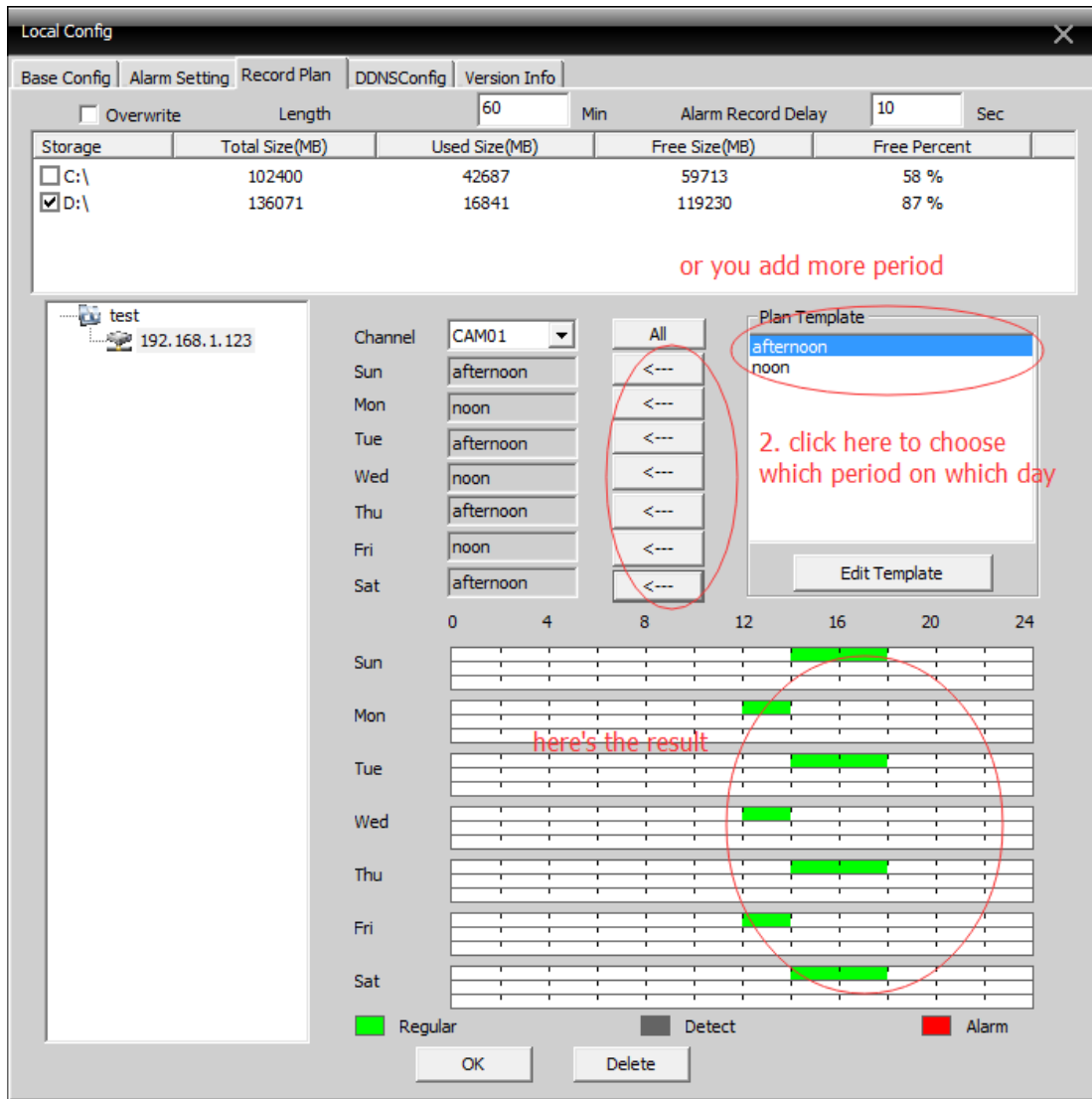
0 4 8 12 16 20 24

Sun: [Green bar from 12 to 18]  
Mon: [Green bar from 12 to 18]  
Tue: [Green bar from 12 to 18]  
Wed: [Green bar from 12 to 18]  
Thu: [Green bar from 12 to 18]  
Fri: [Green bar from 12 to 18]  
Sat: [Green bar from 12 to 18]

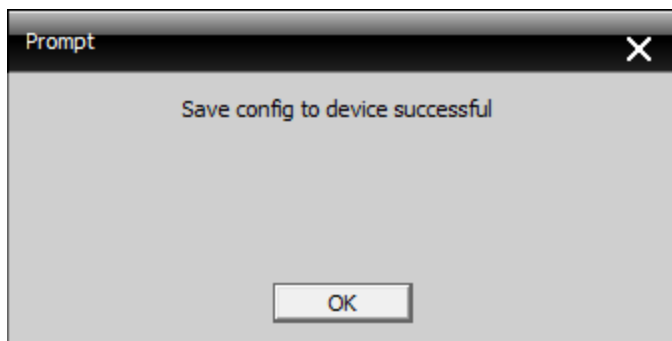
green means setting succedd

Regular Detect Alarm

OK Delete



7.click , then will see

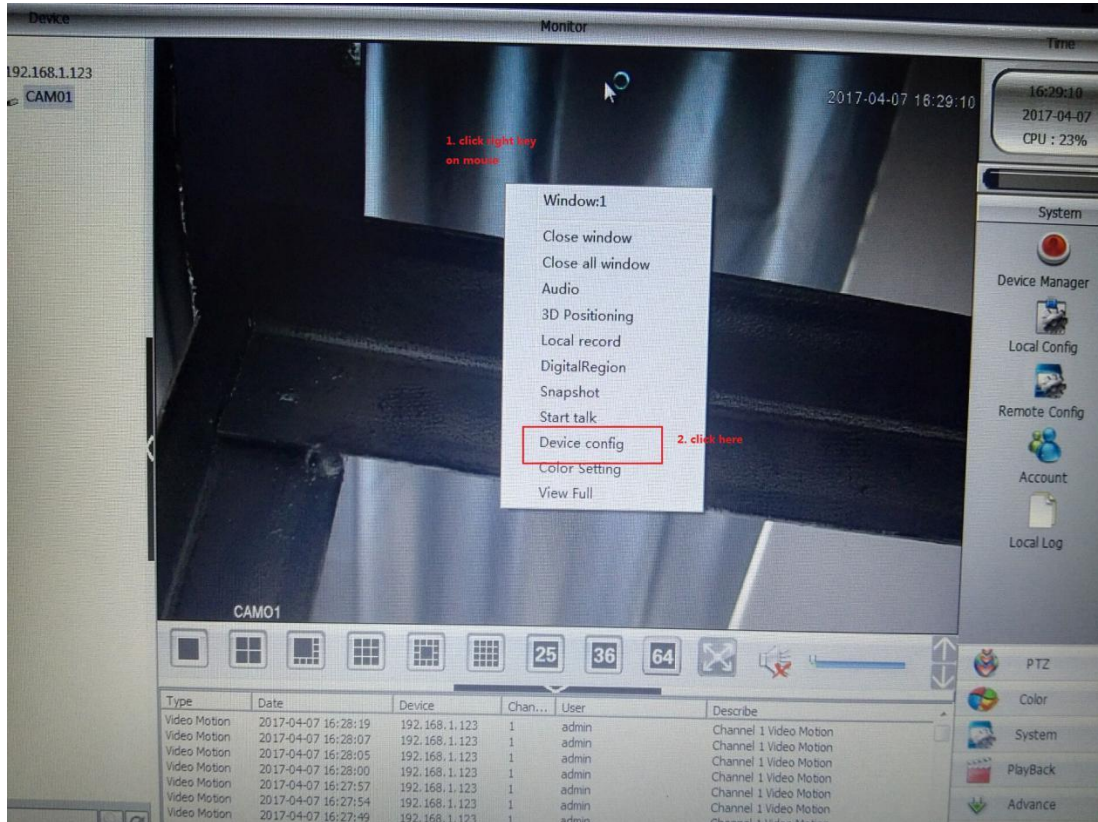


, click OK to finish.

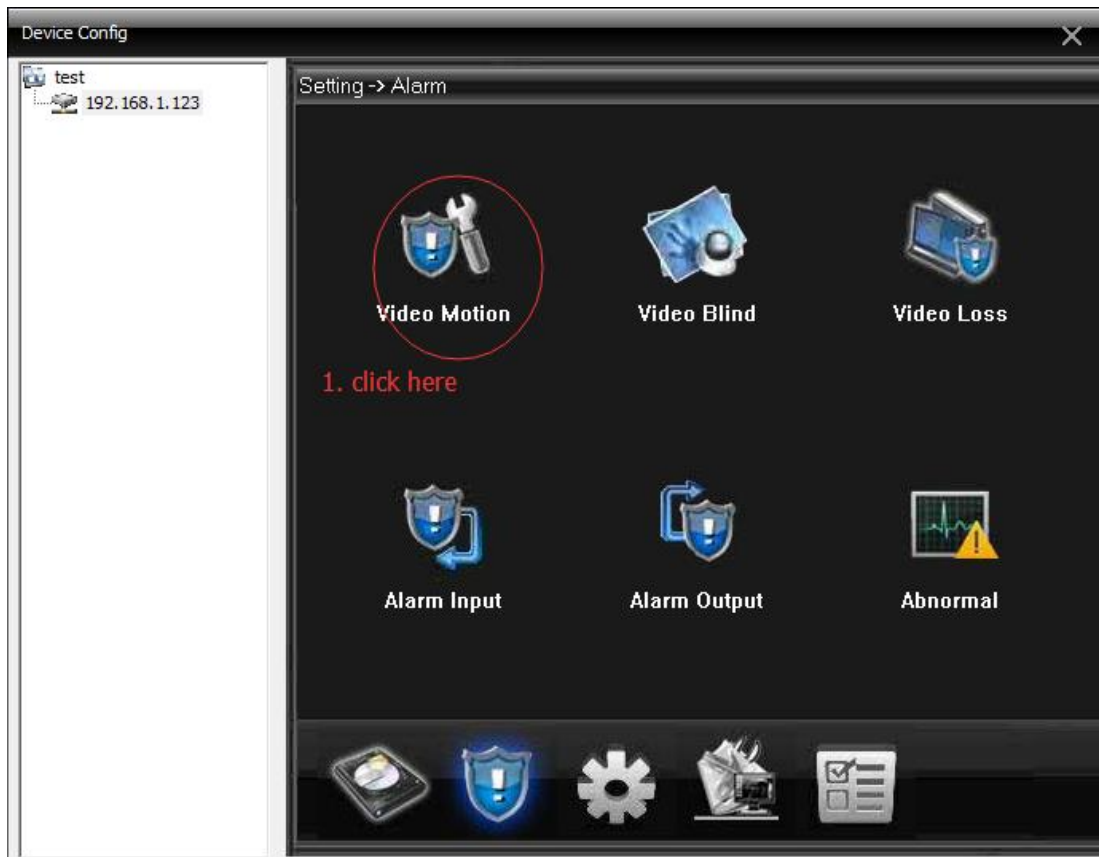
finish .

# Motion Detection Record

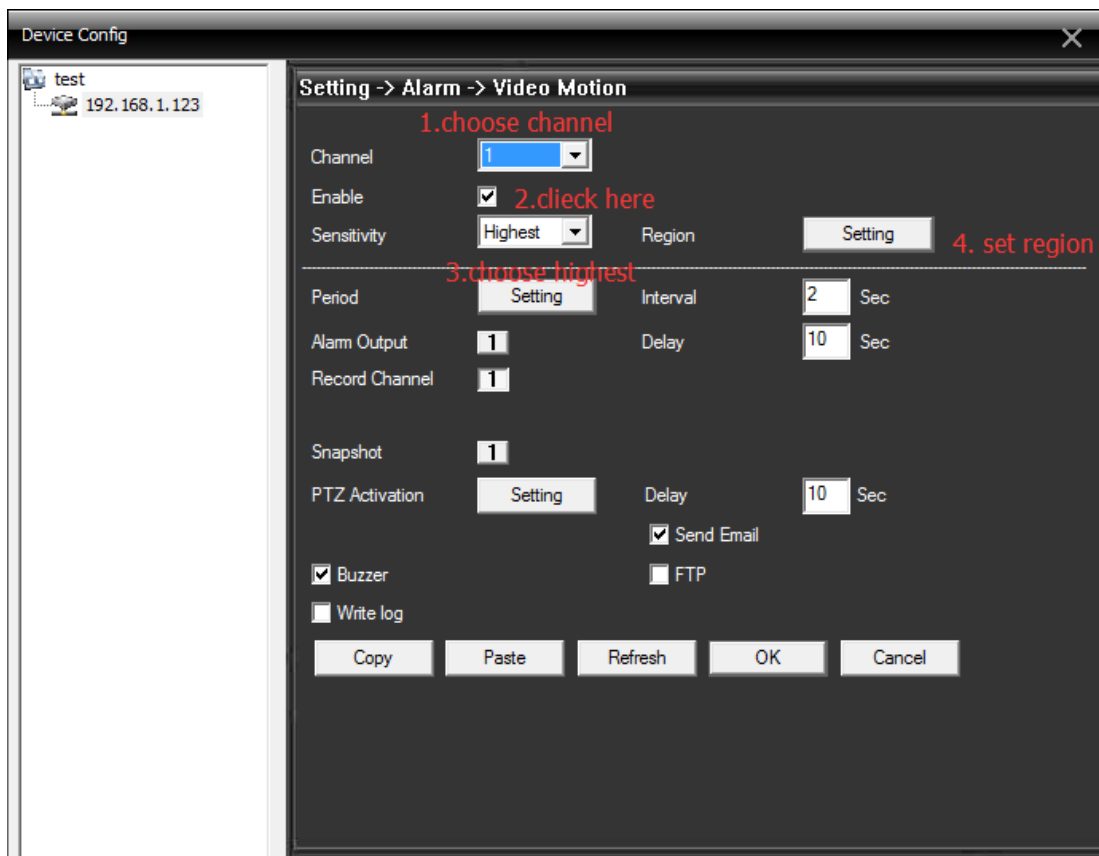
1. Click right key on mouse, then you will see menu and choose "Device config"



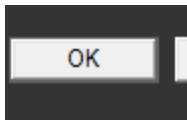
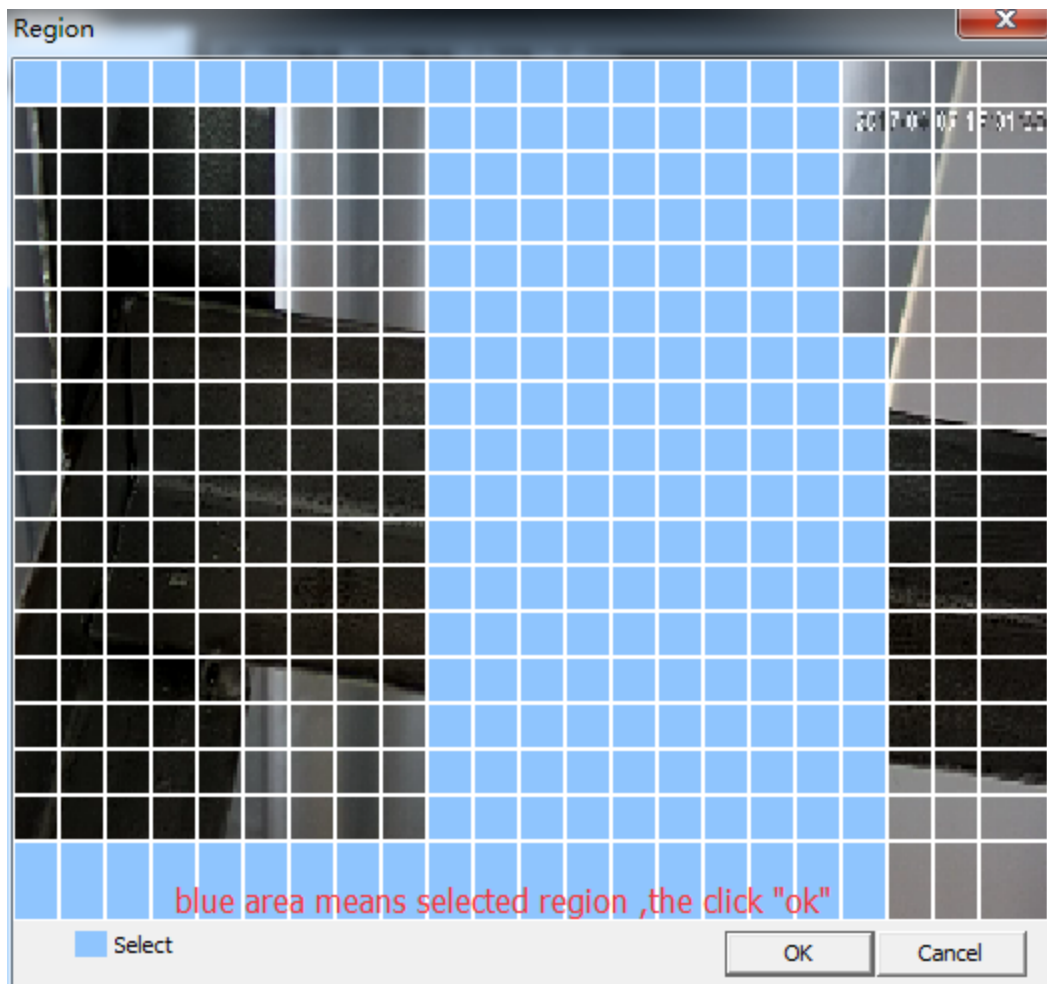
2. Click "Video Motion"





3. please refer to following picture

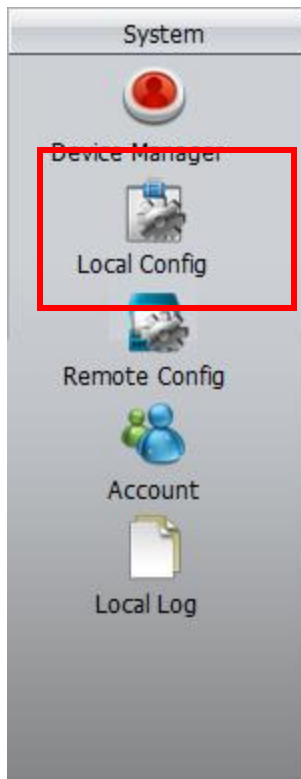
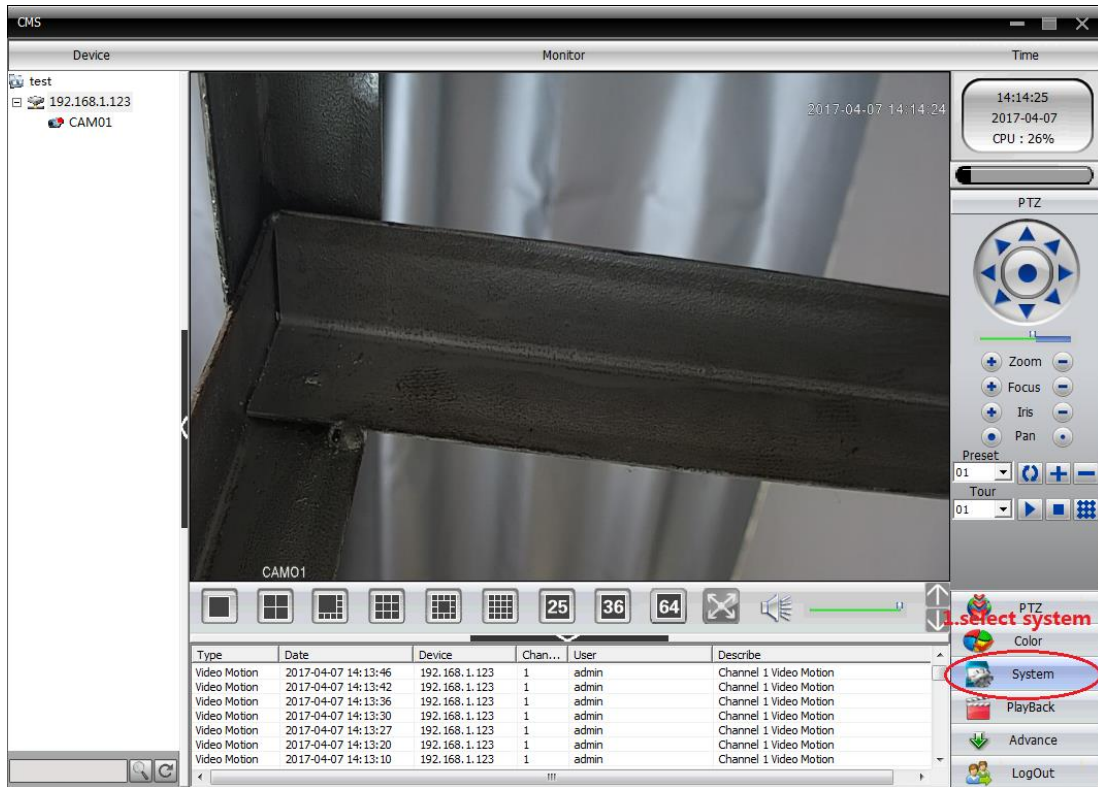






Of course , click to finish.

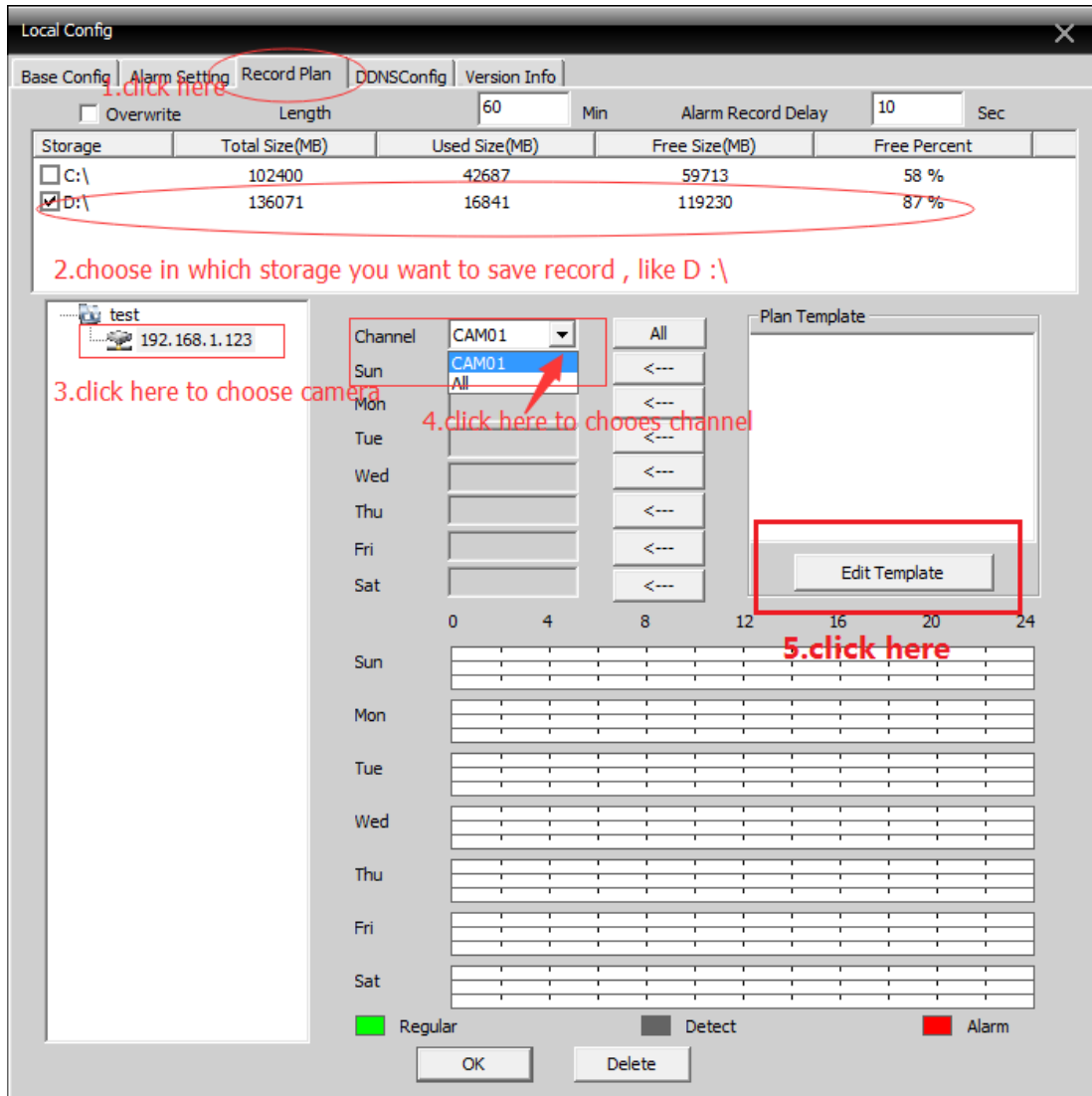
4.click  System on right list. Then choose  Local Config .



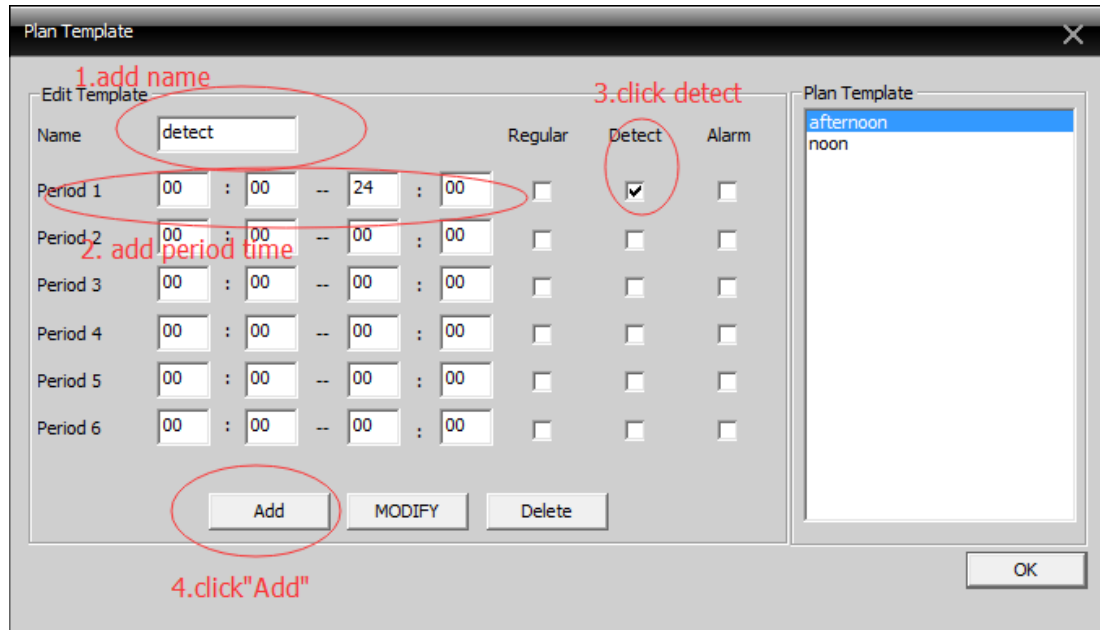
- 5.(1)choose "Record Plan" -
- (2)click which disk you want to save record in -
- (3)select the camera

(4)choose Channel

(5) edit template

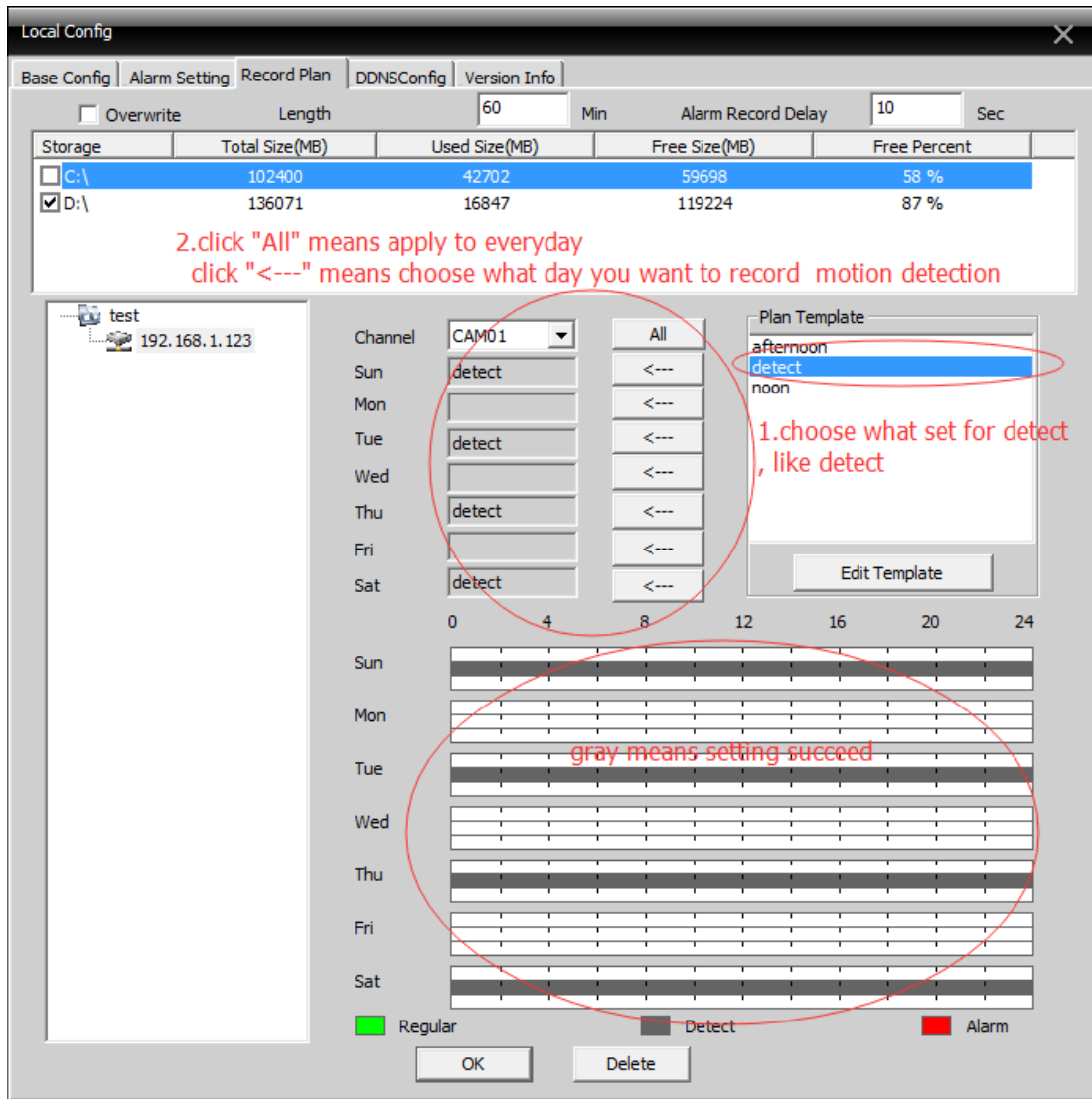


6.please refer to following picture

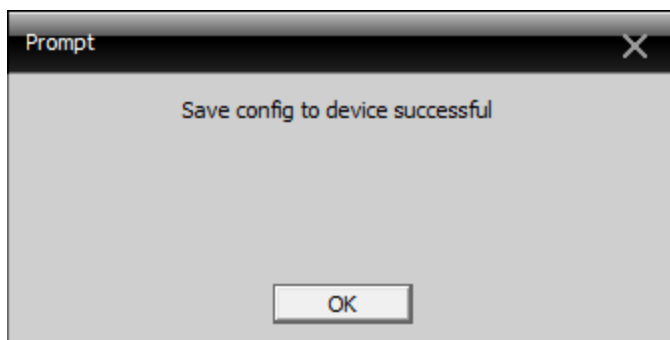


After 4. , please click "OK"  to finish

7.when you finish editing, apply to what day you want to record motion detection



Then click  to finish, you will see



At last, click  to save your setting.